



Dom Tower

112.32 meter

465 steps

This is Utrecht

Mayor:

Jan van Zanen

Aldermen:

Lot van Hooijdonk

Kees Diepeveen

Linda Voortman

Klaas Verschuure

Anke Klein

Maarten van Ooijen

New alderman

(name will follow)

GreenLeft (Groenlinks)

GreenLeft (Groenlinks)

GreenLeft (Groenlinks)

Democrats 66 (D66)

Democrats 66 (D66)

Christian Union (CU)

Democrats 66 (D66)

Chairs per political party on March 21, 2018

GreenLeft (Groenlinks)	12	Christian Union (CU)	2
Democrats 66 (D66)	10	Student & Starter	2
People's Party for		Party for the Animals	2
Freedom and Democracy (VDD)	6	DENK	2
Labour Party	3	Party for Freedom	
Socialist Party	2	and Progress (PVV)	1
Christian Democratic Appeal (CDA)	2	Stadsbelang Utrecht	1



352,941
inhabitants

169 nationalities

160,000 trees

Age

0 - 17 year	69,977	20%
18 - 34 year	120,819	34%
35 - 54 year	94,454	27%
55 - 69 year	42,506	12%
70+	25,185	7%

An illustration of a vibrant park scene. In the foreground, a man and a woman are sitting on a white picnic blanket, surrounded by fruit and drinks. A man stands nearby holding a banana. In the background, a woman is pushing a stroller, a man is playing basketball, and two children are playing soccer. There are two dogs, a white fence, and a building in the distance. The scene is set against a backdrop of large green trees and a bright orange sky.

72% is pleased with local parks



Dom Tower

More than
600 years old
112.32 meter
465 steps

82% is pleased
with the
cultural offering



1,526
concerts
annually

60%
exercise at least
once a week

3.2 million
Dutch day trippers

FC Utrecht
founded in 1970
1,666 league matches
2,385 goals

1,765 shops

75%

is pleased with the local shops

78%
feels
healthy

64% attends a festival
or cultural event

64% cycle in their spare time

91%
enjoy living in
their neighbourhood



900 years
of cityrights
in 2022

689,000
overnight stays in hotels

60% business
40% leisure

800 bridges

5.5 km of canals

65 km of quays

World's biggest
parking garage



Stationsplein



Knoopstalling



Vredenburg



Worldwide 3rd most
bicycle-friendly city

t bicycle



12,500

3,200

FULL

7 train stations

216,000 train travelers
per day

53% cycle to school or work

STATIONSPLEIN

Amsterdam
0:27

Schiphol Airport
0:30

Berlin
5:46

London
4:54

Brussels
2:15

Paris
3:32





University

diploma
University or
higher education

Utrecht NL

49% 28%

27,000

secondary vocational
students

39,600

higher professional
students

32,300

Utrecht University
students

122,000

bus and tram travelers
per day in Utrecht Region



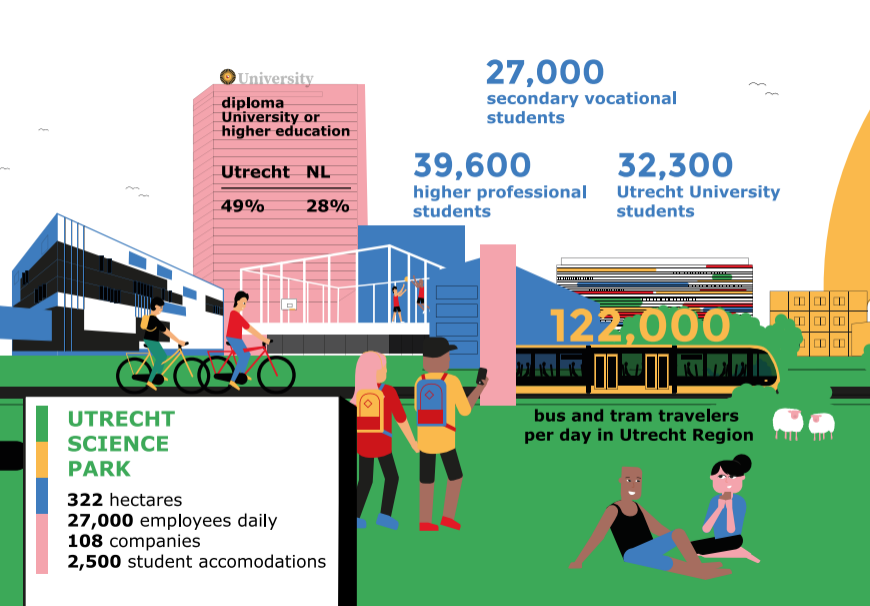
**UTRECHT
SCIENCE
PARK**

322 hectares

27,000 employees daily

108 companies

2,500 student accommodations



jobs growth

246,467
2016

250,880
2017


261,794
2018

39,405

healthcare jobs

39,953
companies

5,000
new
companies



2.7 million m² offices
388.5 hectares business park

Largest business park
Lage Weide **154 hectares**

9.5% of the roofs have solar panels



14,008
jobs
creative
industry



120
innovative
start ups

49,000 new homes planned until 2040

population growth

307,124
2010

334,295
2015

352,941
2019

3,094 new homes in 2018

15% of households use shared car
3% of passenger cars are electric
1,456 charging points

Forecast:
400,000
inhabitants in 2024

over 900
playgrounds

4,817 children
born in 2018